



J.B.BODA



WHealth

Health - Your Ultimate Wealth

NOVEMBER 2024



J.B.BODA

COPD and the Rising Tide of Pollution: A Growing Health Crisis



In recent years, rising pollution levels have intensified health challenges worldwide, especially impacting respiratory health. Air pollution, combined with unhealthy lifestyle choices like smoking, has significantly increased the risk of lung diseases among people of all ages. Among these, Chronic Obstructive Pulmonary Disease (COPD) stands out as a growing health crisis.

This progressive lung condition restricts airflow, making breathing increasingly difficult over time and significantly reducing a person's quality of life and independence. COPD poses a substantial public health threat, highlighting the urgent need for improved management strategies and greater awareness of its long-term impact on both individuals and healthcare systems.

COPD & Asthma: Key Differences and Mechanisms

COPD and asthma are both respiratory conditions that affect airflow and breathing, but they have distinct underlying mechanisms and characteristics.



Asthma:

Primarily a reversible condition, asthma involves airway inflammation and narrowing triggered by specific allergens (like pollen or dust) or irritants (such as smoke or cold air).

Symptoms can vary widely, often being intermittent and responsive to medications that open the airways.



COPD:

This is a progressive, irreversible lung disease primarily associated with long-term exposure to harmful particles or gases, most commonly from smoking. Unlike asthma,

COPD's airway obstruction is chronic, causing persistent breathing difficulties that tend to worsen over time.



J.B.BODA

Risk Factors and Impact of COPD



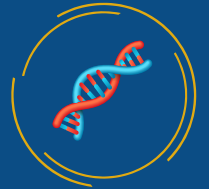
Smoking



Air Pollution



Occupational Hazards



Genetic



Frequent Respiratory Infections



Age



Chronic Asthma

Signs and Symptoms of COPD: Early and Worsening Stages



Chronic Cough



Frequent Respiratory Infections



Shortness of Breath



Increased Breathlessness



Wheezing



Fatigue & Chest Tightness



Coughing Up Blood



Swelling in Ankles, Feet, or Legs



Weight Loss



J.B.BODA

Impact of Climate Change on COPD

Climate change significantly affects individuals with COPD, amplifying the symptoms and complications associated with the condition.

The combination of these factors can intensify the challenges faced by COPD patients, making it crucial to manage the condition effectively while considering these external influences.



Managing COPD: A Multi-Faceted Approach

Proper management of COPD requires a combination of medications, therapies, and lifestyle changes to minimize symptoms and improve quality of life. These approaches include:



Medications: (Suggestive Approach)

- **Bronchodilators:** Relax airway muscles to open passages and ease breathing, available in short and long-acting forms.
- **Corticosteroids:** Reduce airway inflammation to prevent damage and improve breathing.



Pulmonary Rehabilitation: A structured program combining exercise, education, and support to improve endurance and address the psychological aspects of COPD.



Oxygen Therapy: Essential for those with low blood oxygen, improving oxygen levels, symptoms, and overall well-being.

Disclaimer : Follow under the guidance of a physician



J.B.BODA

Complications of COPD

These include:



Increased Susceptibility to Infections:

COPD weakens lung function, making individuals more prone to respiratory infections like colds, flu, and pneumonia.



Heart Problems: Chronic low oxygen levels from COPD can strain the heart, leading to heart failure or other cardiovascular issues.



Lung Cancer: COPD increases the risk of lung cancer, especially for those with a history of smoking.



Pulmonary Hypertension:

Increased blood pressure in the lung arteries, which can develop due to COPD, may cause heart complications.



Mental Health Issues: COPD's chronic impact on life can lead to depression and anxiety, making mental health support important.



Weight Loss and Malnutrition:

Difficulty breathing while eating can reduce appetite, leading to unintended weight loss and malnutrition.



Osteoporosis: Long-term corticosteroid use for COPD can weaken bones, raising the risk of osteoporosis and fractures.



Chronic Respiratory Failure:

In advanced COPD, the lungs may fail to provide sufficient oxygen, requiring oxygen therapy or ventilation.



Cor Pulmonale: Severe COPD can cause right-sided heart failure due to prolonged low oxygen levels.



J.B.BODA

Therapeutic Interventions for COPD Management

Effective management of COPD also includes several therapeutic interventions aimed at preventing complications and improving overall health. These interventions encompass both physical and psychological aspects of care:

Vaccinations: Annual flu vaccinations and pneumococcal vaccines are essential to prevent respiratory infections that can worsen COPD.



Nutritional Support: A balanced diet helps maintain energy and optimal weight, reducing lung strain and improving health.

Quit Smoking Programs: Smoking cessation is crucial for slowing COPD progression, with various support programs available.



Psychosocial Support: Counseling and support groups assist in coping with the emotional impacts of COPD, supporting overall well-being.

Effective management of COPD requires a comprehensive, personalized approach that combines medical treatment with lifestyle changes. This holistic strategy addresses both the physical and emotional aspects of the condition, ensuring better symptom control and improved quality of life. Tailoring the plan to each individual's unique needs is essential for optimal outcomes.





J.B.BODA



Walnut - Aap ka Bima

by J.B. BODA

Online Insurance Policies Made For You

Search, Compare & Apply for customised policies free of cost.



**Health
Insurance**



**Four Wheeler
Insurance**



**Two Wheeler
Insurance**



Scan to Buy

Contact Person: Ms. Karishma Jethwani

 **022 6781 7835**

 **7738008203**

 **info@walnut.com**

Disclaimer: The content does not constitute an offer, solicitation, or recommendation of any Insurance Product or Insurance Policy. It is for general purposes only and does not consider your individual insurance needs. Before acting on this material, you should consider whether the Insurance Product is suitable for your circumstances, and if necessary, seek professional advice

GROUP COMPANIES

J. B. Boda & Co. Pvt Ltd.

- Employee Benefit Schemes
- Wellness Programmes
- Facilitating Life and Actuarial Valuation & Product development
- Risk Inspection
- Training & Seminar

J. B. Boda Insurance & Reinsurance Brokers Pvt. Ltd.

Direct Broking

- Non-Life, Life, Health & all other classes

Reinsurance Broking

- Non-Life, Life, Health & all other classes (Treaty & Facultative)

J. B. Boda Insurance Surveyors & Loss Assessors Pvt. Ltd.

- Fire, Engineering, Miscellaneous Accident Surveyors & Loss Assessors
- Marine Inspection, Hull & Cargo Surveyors, Loss Assessors, Superintendents, Container, Surveyors, Tank Calibrators, Samplers & Analysts
- Asset Valuation

Crowe Boda & Co. Pvt Ltd.

Protection & Indemnity Insurance Services Correspondents in India for:

- Steamship Insurance Management Services Ltd, London – SMUA
- Ship-Owners Mutual Protection & Indemnity Association, Luxembourg - SOP

Head Office: Maker Bhavan 1, Sir Vithaldas Thackersey Marg, Churchgate, Mumbai, Maharashtra - 400 020 (INDIA)
Telephone : + 91 22 6631 4949
E-Mail : jbbmbi@jbbodamail.com | <https://www.jbbodagroup.com>

For feedback and employee benefit requirement please write to sales.healthbenefits@jbbodamail.com

J.B.Boda Insurance and Reinsurance Brokers Pvt Ltd – Registered Office Maker Bhavan 1, Churchgate, Mumbai – 400020, Maharashtra, India. <https://jbbodagroup.com>

Disclaimer : By using or accessing the brochure, you agree with the Disclaimer below without any qualification or limitation. The statements made in this brochure are only for information purpose and not for the purpose of medical advice or guarantee of outcome. If you need medical advice, they should consult a doctor or other appropriate medical professional. J.B. Boda Insurance and Reinsurance Brokers Pvt. Ltd. does not assume liability of the information on this brochure and no representation or warranty has been expressly or impliedly given as to its accuracy, completeness or correctness. The information provided has been gathered from reputable sources such as the website of Ministry of Health and Family Welfare. However, J.B. Boda Insurance and Reinsurance Brokers Pvt. Ltd. is not responsible for errors of omissions in reporting or explanation. No individuals should use this information contained in this brochure for self-diagnosis or self-treatment any health related condition. J.B. Boda Insurance and Reinsurance Brokers Pvt. Ltd. reserves the right to modify, alter, add and delete any one or more of the information provided in the brochure. J.B. Boda Insurance and Reinsurance Brokers Pvt. Ltd. shall be under no obligation to notify you of the amendment to the information. No warranties or assurances are given in regarding the accuracy of the information supplied in this brochure, and that no liability will accrue to J.B. Boda Insurance and Reinsurance Brokers Pvt. Ltd. in the event that you suffers loss as a result of reliance upon the information provided in this brochure. You are responsible for your health and safety at all times. J.B. Boda Insurance and Reinsurance Brokers Pvt. Ltd. does not warrant that any insurance related information provided in this brochure, represents coverage provided to any insured, or are consistent with any present, future, local, state, or central laws, administrative rules, or prevailing case law. Any reference to insurance documents is only for general information and should not be used to claim coverage under any insurance policy.